

PCDWeb

Central Data Platform
on the web

FAST

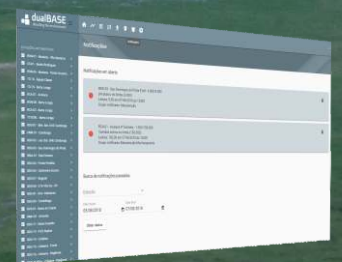
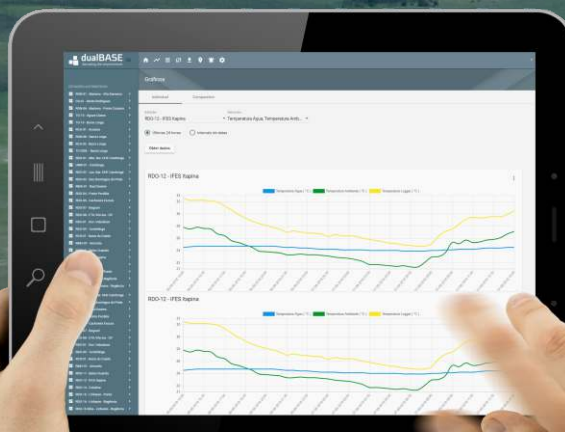
Hydrometeorological data
in real time.

EASY

Multiplatforms: Access
by computer, tablet and
smartphone.

SIMPLE

Intuitive and user-friendly
interface.



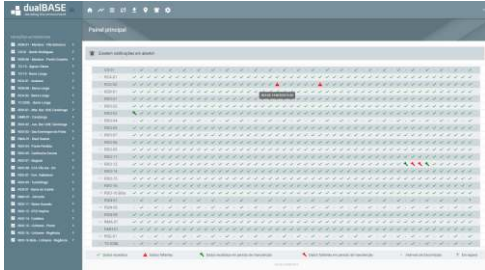


Central data platform on the web



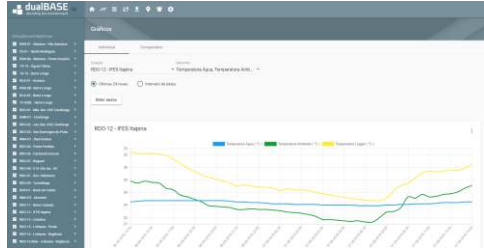
PCDWeb is an online real time platform . Accessible by any internet browser, including Mobiles. It centralizes the data of several types of DCPs, which can be transmitted by various types of telemetry: GSM / GPRS / 3G, GOES Satellite, Inmarsat Satellite, FTP, XML, etc. The system receives, validates and handles data and can generate alerts in case of exceptions via email and / or SMS. It is integrated with other systems, such as, the webservice of the National Water Agency (joint resolution ANA/ ANEEL n ° 03/2010). Platform compatible with several station models, from several manufacturers. Check the list of approved equipment.

PRODUCT DETAILS



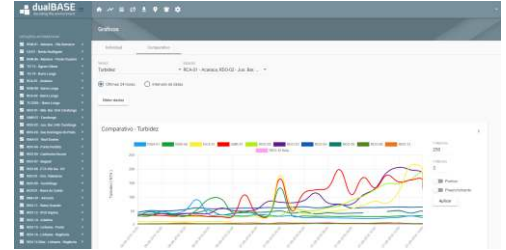
MAIN PANEL

Summarizes the general state of the DCP, notifying if there was any failure of reception and if there was any maintenance in a certain period of time.



INDIVIDUAL GRAPHIC

Create comparative charts from the same station by selecting one or more climate elements simultaneously.



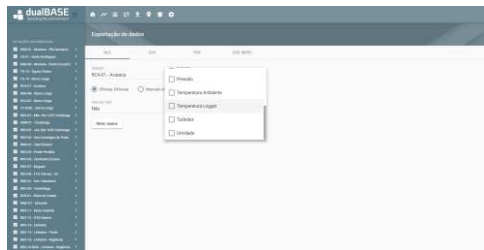
COMPARATIVE GRAPHIC

Create comparative charts from a variable, selecting one or more stations simultaneously.



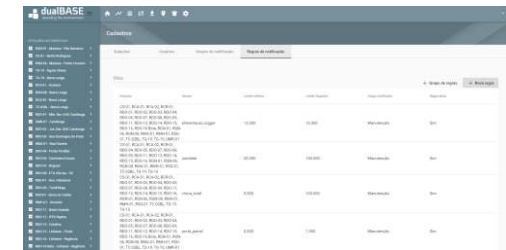
NOTIFICATIONS

The system generates notifications from established maximums and minimums limits. For example, if the temperature decreases below 10 ° C or the level of the river exceeds 250 cm.



EXPORTATION OF DATA

Export data in CSV, PDF, Excel and others formats.



REGISTERS

Register the sensors and metadata of each DCP. Register the users, groups and notification settings.



Features may change without prior notice. Mar/2019

SPECIFICATIONS

- **Multiusers;**
- **Receives, validates and makes the data available in real time**
- **Pre-programmed notification alerts - via e-mail and / or SMS, configured specifically for groups registered independently;**
- **It identifies maintenance periods in each DCP to facilitate data interpretation;**
- **Comparative and dynamic charts;**
- **'Missing data' tool that has the reception rates, per period, of each DCP;'**
- **It can be configured according to your need. Contact us!**

MANUFACTURER



Manufacturer: Dualbase Tecnologia Eletrônica LTDA.
Brand: Dualbase
Model: PCDWeb
Type: Central Data Platform on the web

REPRESENTATIVE

